

Helena Kraljič

# A Letter for the Tooth Fairy



Illustrated by  
Ana Razpotnik Donati





Helena Kraljič



# A Letter for the Tooth Fairy



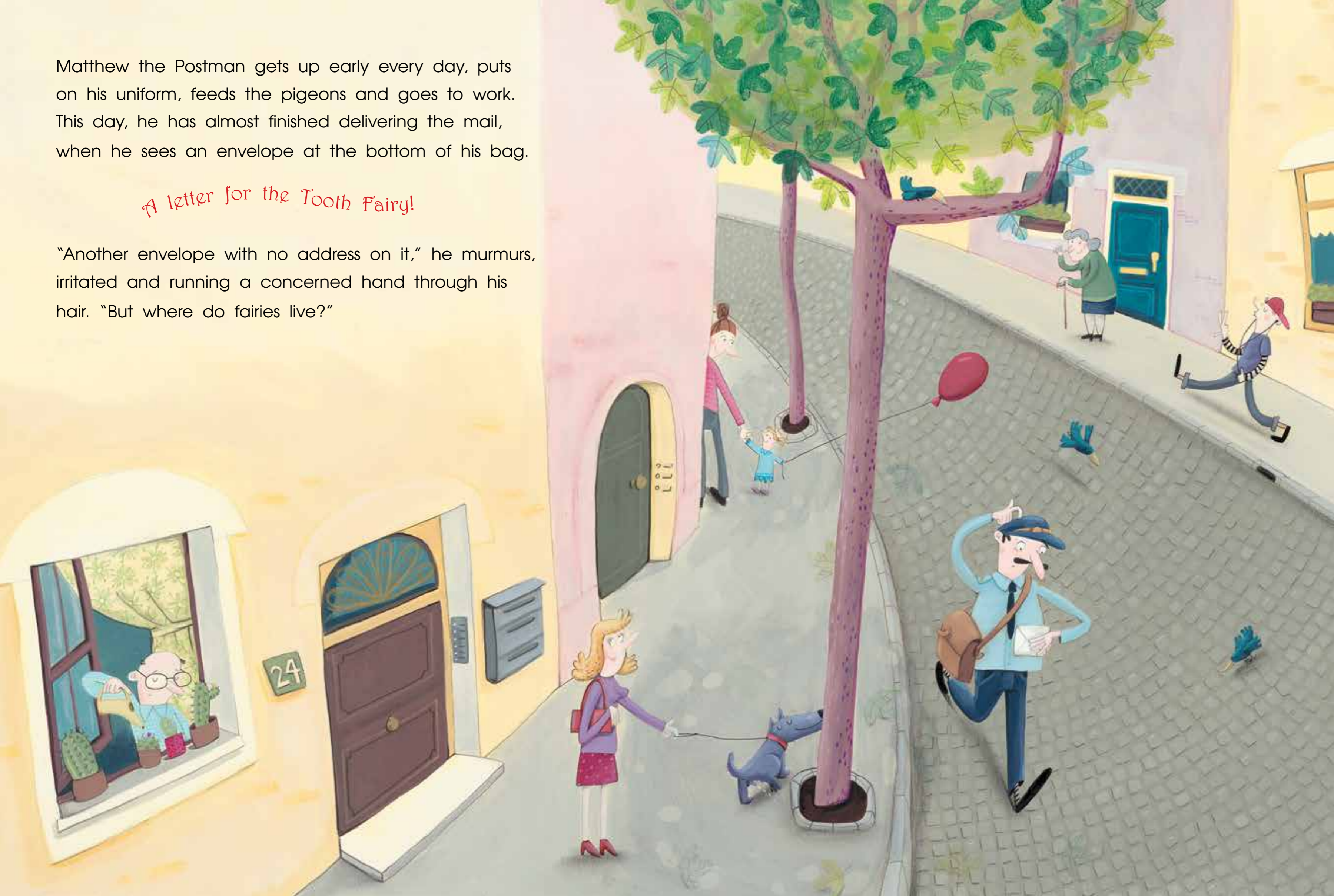
Illustrated by Ana Razpotnik Donati  
Translated by Jason Blake



Matthew the Postman gets up early every day, puts on his uniform, feeds the pigeons and goes to work. This day, he has almost finished delivering the mail, when he sees an envelope at the bottom of his bag.

*A letter for the Tooth Fairy!*

"Another envelope with no address on it," he murmurs, irritated and running a concerned hand through his hair. "But where do fairies live?"





He hops onto his bicycle and heads off towards the forest,



deeper and deeper into it...



he peers among the trees...



he gazes into the hollows...



and under the roots ... but he can't find any fairies.

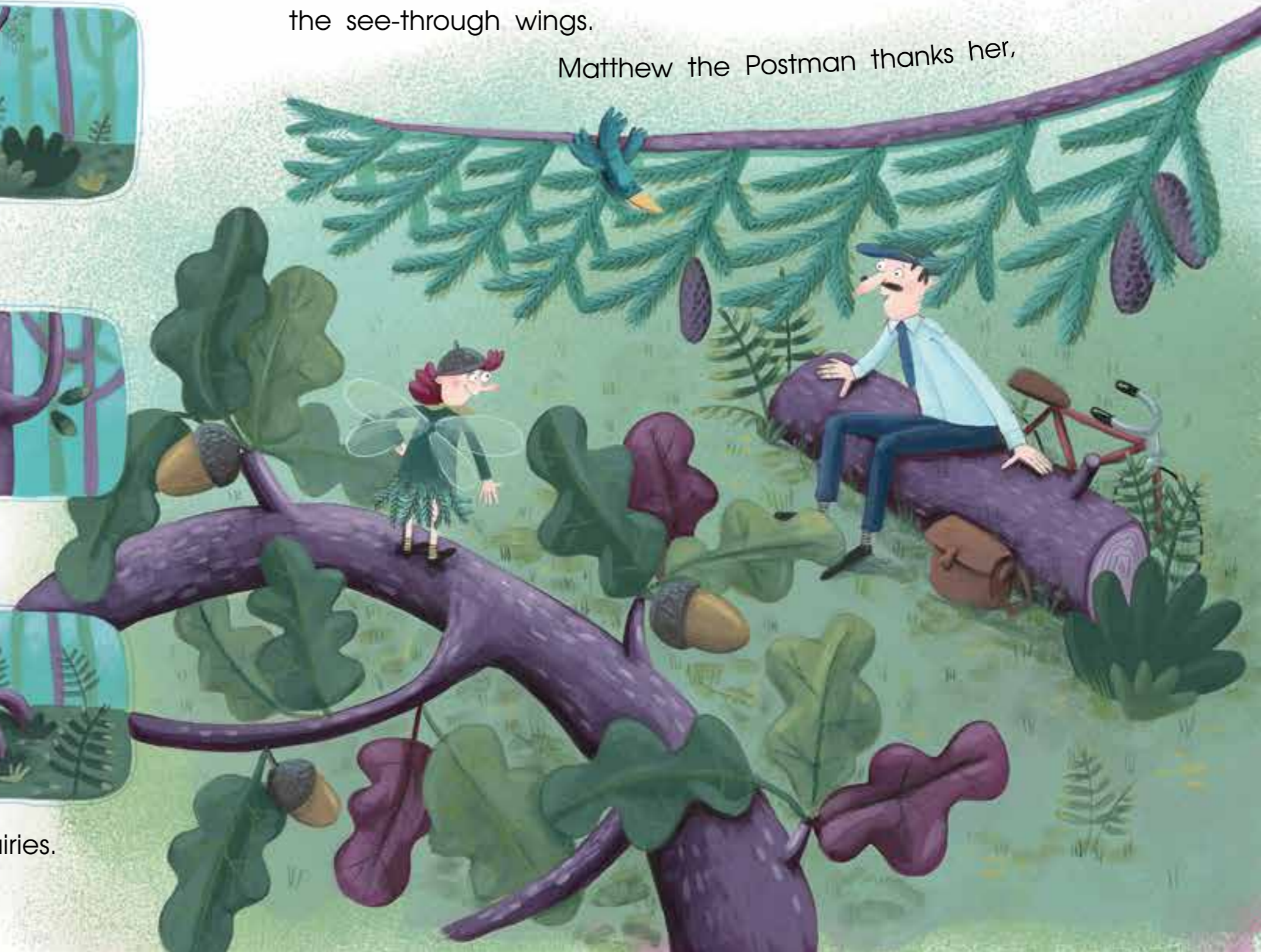
Disappointed, he sits on a rotten old stump, and he hears rustling in the trees above him. Luke hears the gentle voice of Fiona the Forest Fairy: "Who are you? Who are you looking for?"

"I'm Matthew the Postman. I'm looking for the **Tooth Fairy**. I have a letter for her," answers Matthew the Postman.

*"perhaps you know where she lives?"*

"I don't know where the **Tooth Fairy** lives, but she's definitely not in the forest. Look on the meadow," suggests the fairy with the see-through wings.

Matthew the Postman thanks her,





hops back on his bicycle and rides off,



through the forest...



beyond the trees...



across the clearing...



and stops on the meadow.

"Is there anybody here? Can anybody hear me?" he shouts, hoping that someone will answer. Soon he hears a little voice from among the flowers. It's the voices of Farrah the Flower Fairy "Who are you? Who are you looking for?" the Flower Fairy asks.

"I'm Matthew the Postman. I'm looking for the **Tooth Fairy**. I have a letter for her," answers Matthew the Postman.

*"perhaps you know where she lives?"*

"I don't know where the **Tooth Fairy** lives, but she's definitely not on the meadow," answers the fairy with the pink wings.

"Maybe she lives in the water."

Matthew the Postman thanks her,





hops onto his bicycle and rides off,



over the hill,



through the valley,



across the fields,



and the mountain,

until he gets to the sea.

A lot of time passes before he thinks he hears somebody. "Who are you? Who are you looking for?" the Water Fairy Wendy asks him.

"I'm Matthew the Postman. I'm looking for the **Tooth Fairy**. I have a letter for her," answers Matthew the Postman.

*"perhaps you know where she lives?"*

"I've heard that she lives on a cloud," says the Water Fairy.

"And how am I supposed to get to a cloud?" Matthew asks the Water Fairy desperately. The fairy shrugs: "I'm sorry, but I just don't know."

*Sad because he won't be able to deliver the letter,*





he sits back on his bicycle and heads off,



over the mountain,

and the fields,



through the valley,

over the hill,



across the meadow and the and



through the forest. Home.

The next morning he again gets up early, puts on his uniform and feeds the pigeons...

"Pigeons? Perhaps the pigeons can help me take the letter to the Tooth Fairy?" he thinks with excitement. He leans down to the biggest pigeon and says,

"Hello there! I have to deliver a letter to the Tooth Fairy. She lives on a cloud.

*Do you think you can help me?"*

"Of course," nods Percy the Pigeon. "That's the least we can do for all the crumbs that you give us."





He gently clasps the letter in his beak and flies off,



high,

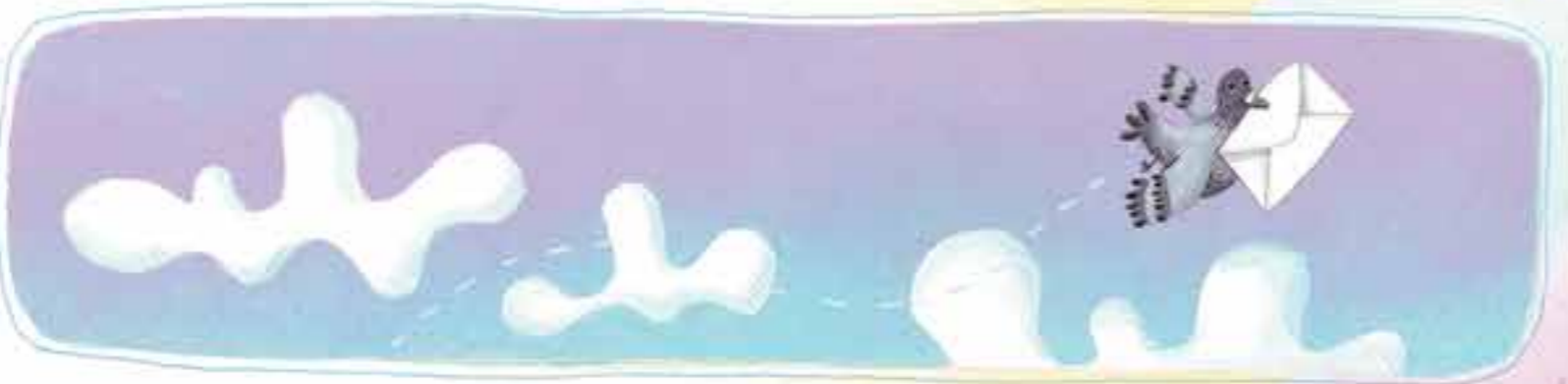
higher,



even higher...



... above the rooftops



and above the clouds.

He delivers the letter to the Tooth Fairy.  
The Tooth Fairy reads:

DEAR TOOTH FAIRY!

My tooth has been wiggling for a long time. I think it will fall out soon. I am writing to you because I am afraid that you won't find me since I am on holidays at my grandma's, who lives at number 7 on the hill.

Sarah.

The **Tooth Fairy** laughs. "I know, I know, Sarah. This very day you bit into an apple and lost your first tooth. The bells were ringing already this morning. They always warn me and tell me where the children are who are waiting for me."





That night, when everything is quiet and only a child's light breathing can be heard, the Tooth Fairy takes away

another beautiful first tooth

leaving behind a coin.





When Sarah wakes up the next morning, she is delighted.  
She runs to Grandma to show her the coin.  
“Grandma, look! The **Tooth Fairy** found me!”

Grandma gives her a big hug:  
“I knew she would. Even if you travelled  
to ~~the~~ **end** of the world.”









In the story you have before you Matthew the Postman has to deliver a letter to the Tooth Fairy. Because there's no address on the letter, the postman sets off to find out where the Tooth Fairy lives. He meets Fiona the Forest Fairy, Farrah the Flower Fairy... but not until he meets Wendy the Water Fairy does he find out where the Tooth Fairy lives. On a cloud. Disheartened, the postman goes back home. It seems that for the first time in his life he won't be able to deliver a letter.

Will Matthew the Postman somehow find a way to get little Sarah's letter to the Tooth Fairy?

Or does the Tooth Fairy live too far up?

